





Petal Trails

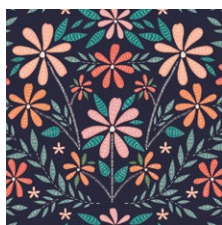
QUILT DESIGNED BY AGFstudio

Meriwether

FABRICS DESIGNED BY AGF STUDIO



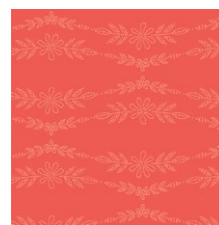
MEW-36304  
COTTONTAIL PLAYFUL



MEW-36300  
COTTAGE GARDEN STILL



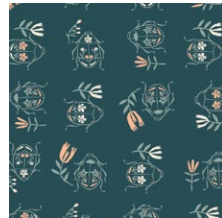
MEW-46303  
WISPY CLOUDS GAZE



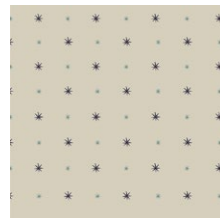
MEW-36306  
EMBROIDERED GARLAND PEONY



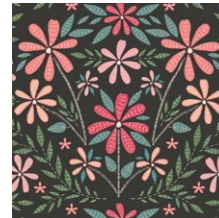
MEW-46306  
EMBROIDERED GARLAND ROSE



MEW-36307  
JUNE BUG WALTZ



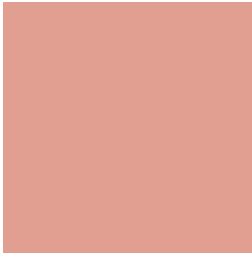
MEW-36301  
GLIMMER & GLOW



MEW-46300  
COTTAGE GARDEN BLOOM



ADDITIONAL BLENDERS FOR THIS PROJECT



PE-488  
BLOSSOMED



PE-452  
SPRUCE



PE-463  
ZAMBIA STONE



FINISHED SIZE | 70" x 70"

## FABRIC REQUIREMENTS

Fabric <b>A</b>	MEW-36304	1 yd.
Fabric <b>B</b>	MEW-36300	1 yd.
Fabric <b>C</b>	MEW-46303	½ yd.
Fabric <b>D</b>	MEW-36306	¾ yd.
Fabric <b>E</b>	PE-488	½ yd.
Fabric <b>F</b>	MEW-46306	½ yd.
Fabric <b>G</b>	MEW-36307	¾ yd.
Fabric <b>H</b>	PE-452	¼ yd.
Fabric <b>I</b>	PE-463	¼ yd.
Fabric <b>J</b>	MEW-36301	2¾ yds.
Fabric <b>K</b>	MEW-46300	¼ yd.

**BACKING FABRIC**  
MEW-36307 -4½ yds. (suggested)

**BINDING FABRIC**  
MEW-36306 (Fabric **D**) (included)

## CUTTING DIRECTIONS

¼" seam allowances are included.  
WOF means width of fabric.

- Four (4) 7½" squares from fabric **A**
- Four (4) 7⅞" squares from fabric **A**
- One (1) 10½" square (On Point) from fabric **A**
- Four (4) 7⅞" squares from fabric **B**
- Twelve (12) 7½" squares from fabric **B**
- Eight (8) of template 1 from fabric **C**
- Eight (8) of template 1 from fabric **D**
- Eight (8) of template 1 from fabric **E**
- Eight (8) of template 1 from fabric **F**
- Twelve (12) 7⅞" x 7⅞" squares from fabric **G**
- Two (2) 7⅞" x 7⅞" squares from fabric **H**



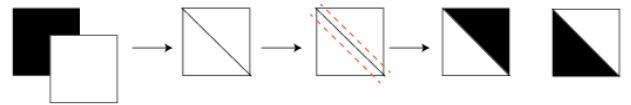
- Two (2) 7⅞" squares from fabric **I**
- Twenty-Four (24) 7⅞" squares from fabric **J**
- Two (2) 7¾" squares from fabric **J**
- Thirty-Two (32) 7½" squares from fabric **J**
- Two (2) of Template 1 from fabric **K**

## CONSTRUCTION

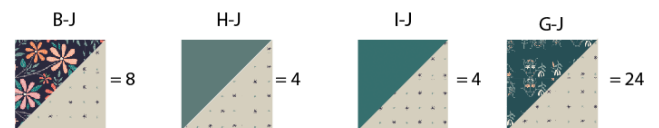
Sew all rights sides together with ¼" seam allowance.

### HST construction

- Pair two 7⅞" fabric squares, right sides facing.
- Draw a line diagonally corner to corner using a mechanical pencil or frixion pen.
- Stitch ¼" on each side of the drawn lines.
- Cut the pieces apart along the marked diagonal line.
- Press and trim to 7½" x 7½".



- To accomplish the HST construction take four 7⅞" squares from fabrics **A** and **B**, two 7⅞" squares from fabric **H**, **I**, twenty 7⅞" squares from fabric **J**, and twelve 7⅞" squares from fabric **G**.



- For fabric **A**, make sure to cut two 7⅞" squares from left to right and two 7⅞" squares from right to left.
- This way you will be able to maintain the direction of the fabric.

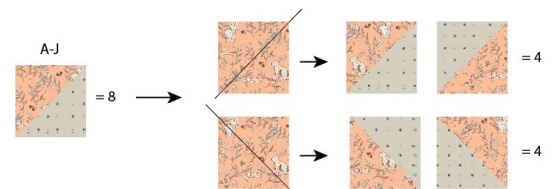


DIAGRAM 1

- Take one  $7\frac{3}{4}$ " square from fabric **J** and one template 1 from fabric **K** and place it on top of the block as in the diagram below.
- Top stitch around the petal using straight stitch or zig zag stitch.
- Then, cut at the diagonal.



DIAGRAM 2

- Take another  $7\frac{3}{4}$ " square from fabric **J** and one template 1 from fabric **K** and place it on top of the block as in the diagram below.
- Cut at the diagonal on the opposite direction.



DIAGRAM 3

- Join one unit on one corner of the  $10\frac{1}{2}$ " square from fabric **A** and the other half on the other corner of the piece.
- Repeat the same previous steps in order to complete your center block, which should measure  $14\frac{1}{2}$ " x  $14\frac{1}{2}$ ".

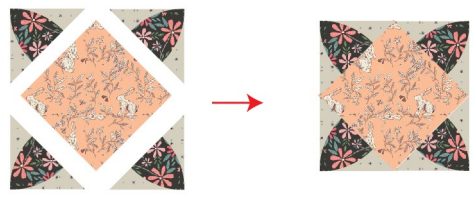


DIAGRAM 4

- Take eight template 1 from fabrics **C, D, E, F** and (32)  $7\frac{1}{2}$ " x  $7\frac{1}{2}$ " squares from fabric **J** and pair each petal following the diagram below.
- Use straight stitch or zig zag stitch to secure the petals.

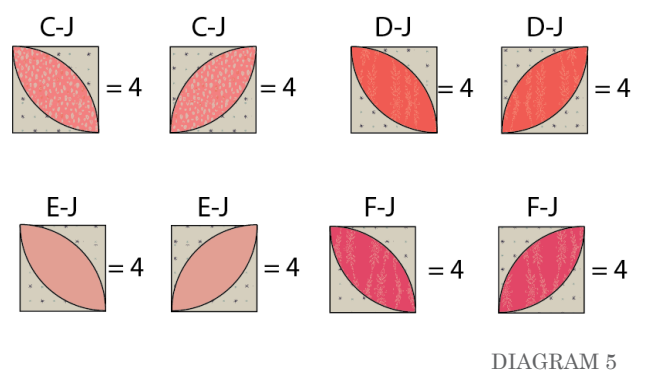


DIAGRAM 5

- Join two **C-J** block, two **D-J**, two **E-J** and two **F-J** following the diagram below.

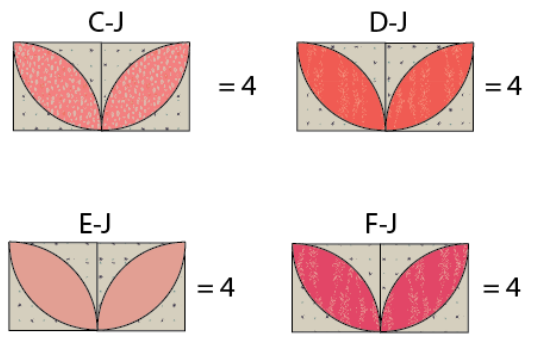


DIAGRAM 6













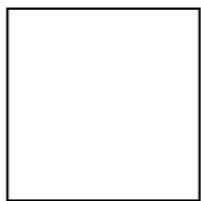
[artgalleryfabrics.com](http://artgalleryfabrics.com)

NOTE: While all possible care has been taken to ensure the accuracy of this pattern, We are not responsible for printing errors or the way in which individual work varies.

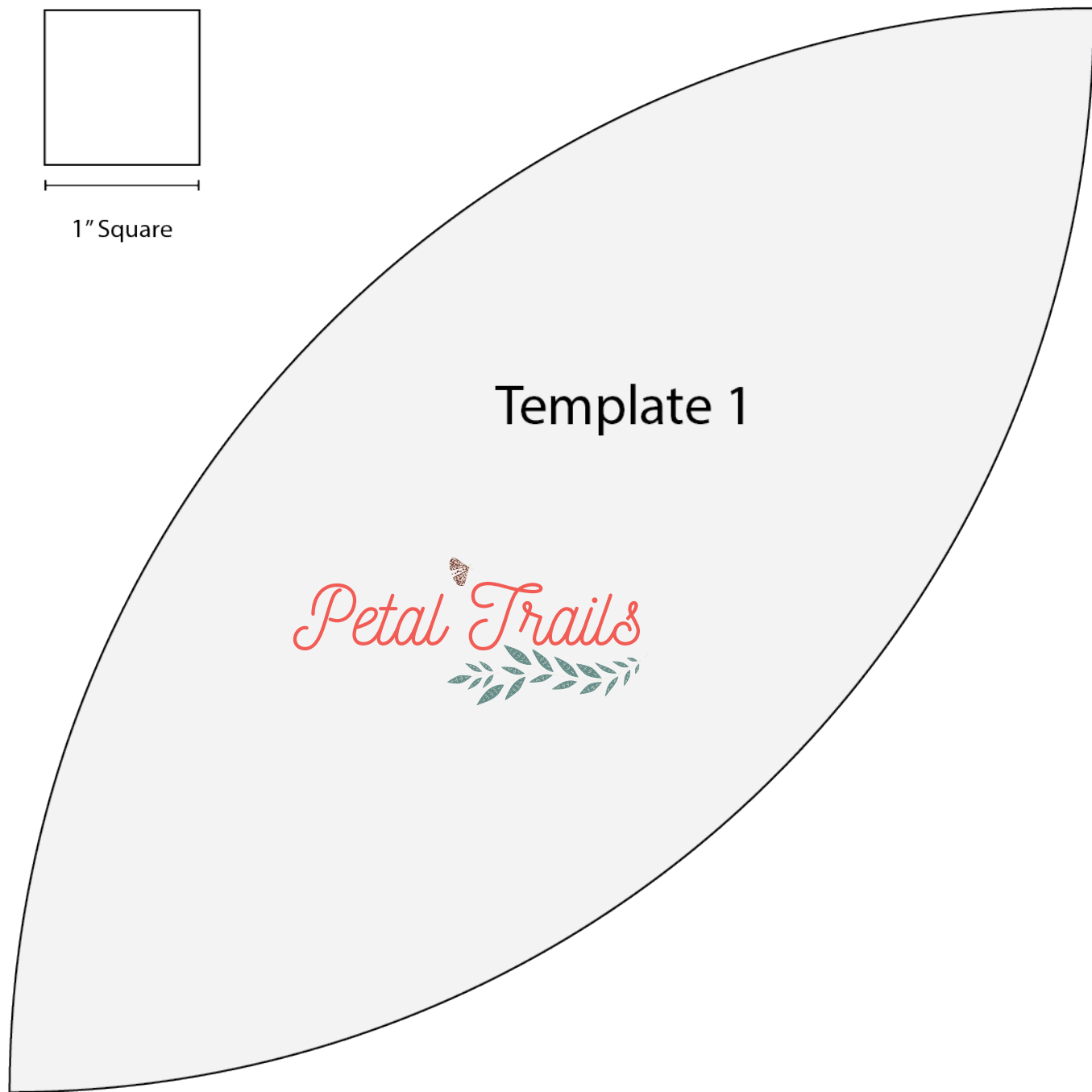
Please read instructions carefully before starting the construction of this quilt. If desired, wash and iron your fabrics before starting to cut.

© 2020 Courtesy of Art Gallery Quilts LLC. All Rights Reserved.

Printer Test



1" Square



Template 1

